



Top 5 reasons to choose HPE GreenLake for VDI

Organizations adopt VDI to support their digital workplace strategy are attracted by VDI cloud offers, but very often a public cloud model is not a viable option, due to latency issues, egress costs, security and compliance constraints.

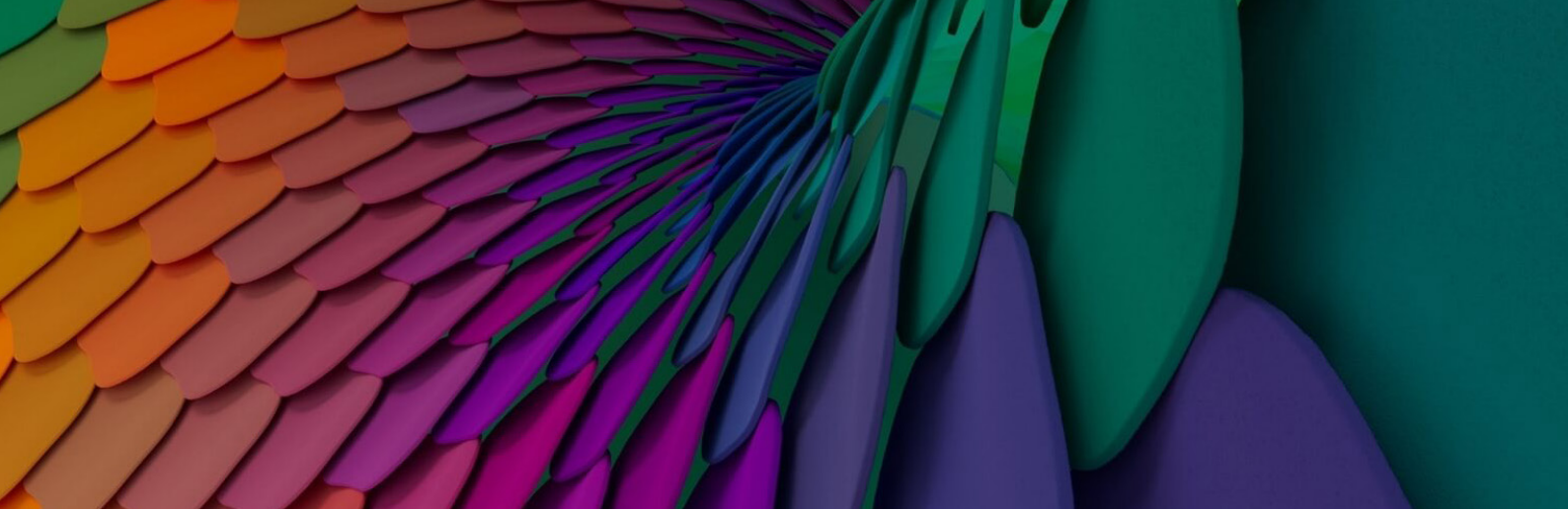


HPE GreenLake for Virtual Desktop Infrastructure (VDI) offers organizations with on-site, remote, or mobile workers a unique, secure, as-a-service option to keep their workloads on-premises, scale simply, and pay per user,* per month. Our multivendor remote work solutions and comprehensive capabilities with HPE GreenLake Management Services help enable company applications and collaboration with a cloud-like experience and flexibility. With HPE GreenLake for VDI, HPE is poised to redefine end-user experience and productivity at the edge.

Hop aboard the next normal and power new ways of working with HPE GreenLake for VDI. Gain on-premises VDI with cloud-like economics and scalability. Here are the top five reasons to choose HPE GreenLake for VDI:

- 1 Time to value:** Avoid lengthy rollouts with quick-to-deploy, preconfigured, turnkey solutions. We use reference architectures that can be quickly deployed and HPE GreenLake works to keep capacity ahead of demand, without lengthy capital purchase time frames.
- 2 Economics:** No capital outlay or up-front costs—financial benefits of the cloud with security and performance of on-premises. Delivered as a service with a monthly bill based on consumption. And because you have the option of having HPE manage the environment for you and billed per use monthly, you can focus your IT teams on other critical aspects of keeping your business running.
- 3 Scalability:** Respond quickly to changing business needs with seamless scalability. With cloud-like flexibility, you can align growth with demand through a pay-per-use consumption model and meeting on-premises security and compliance regulations. The infrastructure and support services are designed to scale. Simply let Hewlett Packard Enterprise know when you want to add more users and we take care of the rest.
- 4 Compliance:** Workloads stay on-premises, offering enhanced control. Many industries have to meet regulations for where and how their data is secured and managed. Keeping the VDI solution within your own data center means a more compliant infrastructure and more control over how information is stored and secured.
- 5 Performance:** Office workers are still physically close to the servers providing VDI, and remote VPN users also have their virtual desktops right next to their VPN access, meaning better performance and more control over performance. Graphic-intensive users can get the performance they need. Distance dilemma, solved. On-prem accelerated GPU is uniquely positioned to meet customer requirements for demanding power and engineering user profiles who need an on-premises solution with accelerated graphic capabilities.

* May be subject to minimums or reserve capacity may apply



Getting started with HPE GreenLake is easy.

Start with a one-day, virtual, and collaborative VDI workshop.

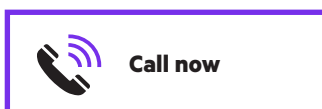
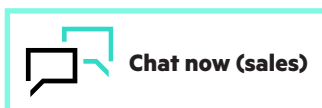
- Define a solution to meet your needs
- Get the infrastructure in your data center or colocation facility
- Scale seamlessly to meet evolving demands

Empower your diverse remote workforce

- **Power new ways of working with VDI:** HPE GreenLake for VDI offers inherently secure on-premises VDI tailored to your needs, which lets you avoid high up-front costs, speed time to value, and scale seamlessly to align resources with demand. Enable secure remote work with scalable, pay-per-use VDI.
- **Proven leader for every need:** HPE has deep experience, with the widest range of architectural options to meet complex VDI needs. HPE offers a best-of-breed ecosystem with options to meet customer requirements for Citrix, VMware®, NVIDIA®, and Nutanix-based solutions.

HPE GreenLake for VDI brings cloud-like economics and agility together with the performance, compliance, and control you expect from your on-premises IT.

Make the right purchase decision.
Contact our presales specialists.



Learn more at

HPE.com/edge/HPE-GreenLake-Virtual-Desktop-Infrastructure

Explore **HPE GreenLake**



© Copyright 2023 Hewlett Packard Enterprise Development LP. The information contained herein is subject to change without notice. The only warranties for Hewlett Packard Enterprise products and services are set forth in the express warranty statements accompanying such products and services. Nothing herein should be construed as constituting an additional warranty. Hewlett Packard Enterprise shall not be liable for technical or editorial errors or omissions contained herein.

NVIDIA is a trademark and/or registered trademark of NVIDIA Corporation in the U.S. and other countries. VMware is a registered trademark or trademark of VMware, Inc. and its subsidiaries in the United States and other jurisdictions. All third-party marks are property of their respective owners.

a50007894ENW